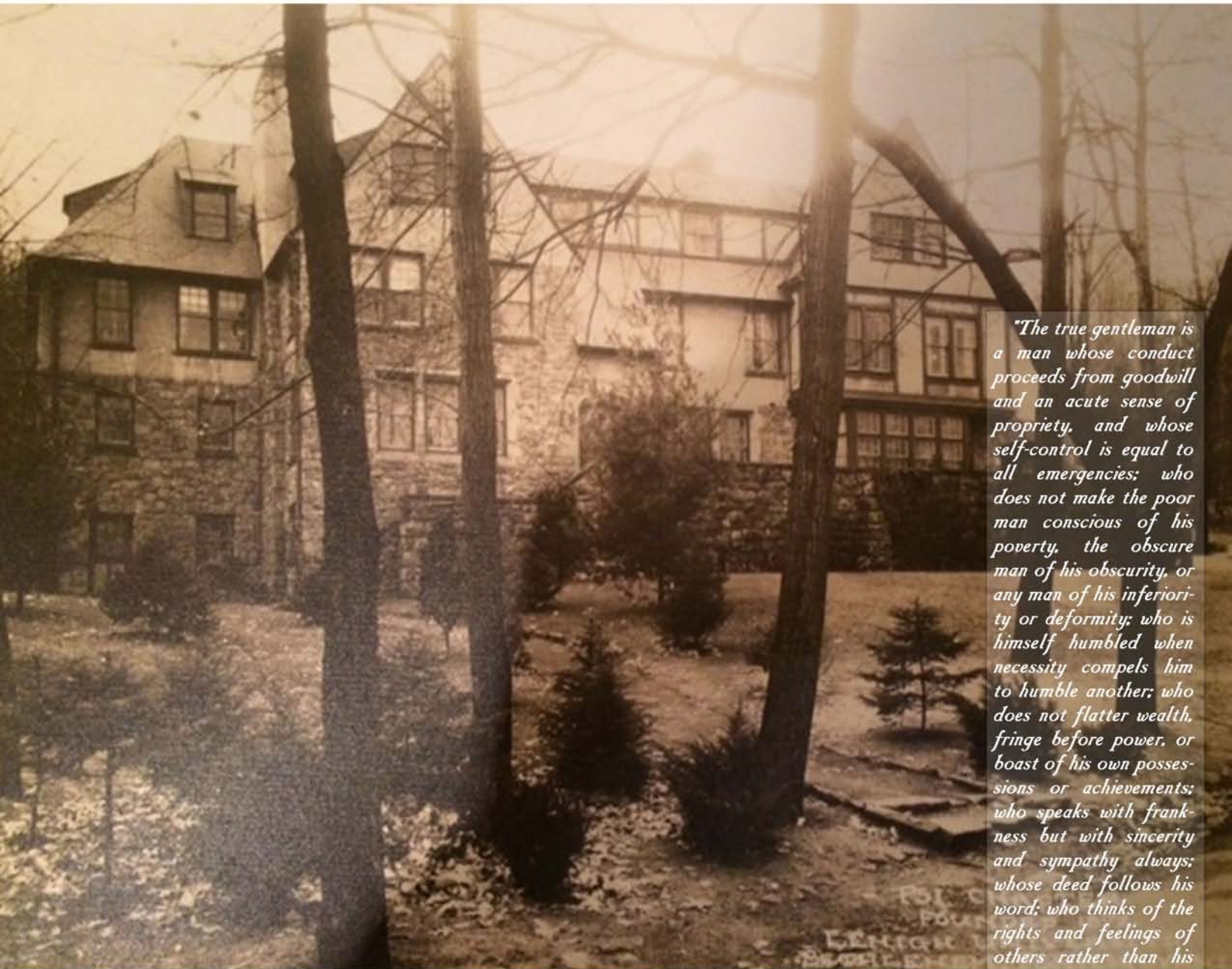


Briarfield ASSOCIATION

CHI PHI, PSI CHAPTER, LEHIGH UNIVERSITY - EST 1872

NEWSLETTER

SPRING 2015



"The true gentleman is a man whose conduct proceeds from goodwill and an acute sense of propriety, and whose self-control is equal to all emergencies; who does not make the poor man conscious of his poverty, the obscure man of his obscurity, or any man of his inferiority or deformity; who is himself humbled when necessity compels him to humble another; who does not flatter wealth, fringe before power, or boast of his own possessions or achievements; who speaks with frankness but with sincerity and sympathy always; whose deed follows his word; who thinks of the rights and feelings of others rather than his own; and who appears well in any company, a man with whom honor is sacred and virtue is safe."

CONTENTS

PRESIDENT'S LETTER	2	EVENTS IN PICTURES	11
ITHE ACTIVES	3	OUR HISTORY	12
Letter from the Alpha		FEATURES	14
Meet the New Members		Fraternity Challenges 2015	
Internships		Dear Salty	
Meet an Active		Alumni Spotlight	
FROM THE UNIVERSITY	8	Our Brothers at Lafayette	
A Word from Tim		John C. Schmidt '68 Loan	
NATIONAL NEWS	9	Chapter Eternal	
Grand Alpha-Elect		DUES	16
Grand Council Meeting			
Gladfelter Fund			



Greetings Brothers!

I'm pleased to announce that our chapter has had a very successful year, replete with growth and improvements. We welcomed 16 new brothers into our chapter, resulting in a current membership of 60 actives. Our chapter has bounced back from the financial challenges presented last year when the FMA collapsed. The positive progress we continue to see with our chapter is commendable amidst such a rapidly changing Greek culture. The constant support of our alumni both on and off campus is direct result of our continued success.

Having successfully moved on from the alcohol incident in 2013, our chapter is now allowed to have alcohol in the house and is in good standing with the University and National. As part of their reintroduction to alcohol program, they arranged a successful "parent's weekend dinner" in the Fall and we arranged a holiday cocktail party for actives and alumni in December. The latter event was semi formal with cocktails, food, and live jazz. We will make this an annual holiday event for our alumni and their families.

At the beginning of this semester, we had our annual Alumni / Active Realignment Retreat (AARR). The purpose of this two-day workshop is to give the actives the opportunity to work with the alumni on the five most challenging issues they are facing. With five alumni participating each day, we addressed the following areas: Briarfield / Actives Relations, Community Reputation, Risk Management, New Member Education, Recruitment, and Member Involvement / Productivity / Accountability. The topic that sparked the most interest was New Member Education. When we repopulated in 2010, we did so with a radically different New Member Education program, a model akin to that of what Masonic groups do. The entire program was three days and focused on ritual/ceremony, our history, team building, and a comprehensive education on of what it meant to be a Chi Phi. This condensed program accomplished our goals, while also preventing time for potential hazing. Over time, the actives felt like they could not accomplish their goals within the 3-day program. They felt as though the meaning behind all of the content was less impactful because it happened so quickly. As a result, we allowed them to present to the Briarfield trustees an extended program. After reviewing and voting on their proposed three week program, the trustees identified a potential benefit to a longer program, and although it was a close vote, approved the program as a test run for the Spring 2015 semester only. We now have a committee set up with alumni and actives to fine-tune this program into an innovative and modern new member education program that can stand as the model for years to come. National views hazing as the number one issue and is currently working on a "standardized" new member education program for all Chi Phi chapters to adopt. The psi chapter has decided to spearhead this initiative and, at Congress this summer, will be presenting a program that we hope will become help in forming the standard for Chi Phi nation-wide.

One of my major initiatives this year was to take steps to rebuild our Briarfield account, which has been heavily depleted from the investment made in our repopulation in 2010 and also from the financial assistance we gave the chapter when the FMA collapsed. We began to move forward with this goal by: 1) bettering our communications with alumni through an improved mailing of our newsletter and awareness of our goals, and 2) challenging our alumni to donate \$150 in the Lehigh / Lafayette Challenge. We had 49 brothers pay their dues and donate from Aug 2014-Jan 1 2015, and 51 brothers participate in the Lehigh / Lafayette \$150 Challenge. The challenge alone brought in \$7,650. And, most importantly, we defeated the Rho chapter at Lafayette by 10 donors! Thank you again, to all the brothers that contributed! Lehigh / Lafayette at Yankee's stadium was a great success. All 80 seats that we secured for alumni were quickly reserved, and as anticipated, Chi Phi's both young and old crossed paths at the Dugout Bar before the game. (If you have photos from the event with you and your Chi Phi brothers, please send them to me.)

Another goal this year was to have more social events for alumni, particularly at the chapter house. Many of our fondest memories have taken place within the walls of our house, and I believe it is important for our alumni to have the opportunity to come back with their families. Part of this ongoing initiative includes strengthening our communications with alumni, determining effective ways to build engagement, and work towards better attendance at social events both at the chapter house and offsite. At the chapter house this year, we had a semi-formal holiday cocktail party in the fall and a "porch BBQ" in the spring where we ceremoniously transitioned the graduating seniors into alumni. Other events not held at the house included a pre-Yankee stadium event at 'The Dugout' in the Bronx, eight happy hours; four in Philadelphia and four in NYC, the 25th annual golf outing, and the 3.0 dinner in Philadelphia with the actives. To continue to grow in this area, we need a brother to spearhead the social calendar and marketing of our events. Please reach out to me if you are interested.

About a year and a half ago, we received a very generous gift of 20K into the P&E account from the estate of brother John C. Schmidt. Brother Schmidt graduated in 1968 with an Industrial Engineering degree. We have used this money to set up a loan program for our active brothers, the John C. Schmidt '68 Chi Phi Loan, designed to cover half of a brother's semester fees. We have worked with the university over the past six months to solidify the process and formalize the loan. The loan will be treated like any other university loan, except the Briarfield will be in charge of determining the recipient. We will issue on average one per semester based off of criteria such as academic standing, financial need as determined by OFA, and leadership in and out of the fraternity.

This year's Congress will be held in San Francisco in June. Br Abels and I are pleased to announce that we'll be joining the Grand Council under Grand Alpha-Elect Ron Frank. Br. Abels will serve as Grand Delta and I will serve as Grand Epsilon. This is a wonderful honor for us, and great exposure for our chapter. We look forward to making an impact on the fraternity on a National level.

In summation, brothers, it is a privilege being able to continue to serve as your president. I'm thankful for all the dedicated alumni that work in concert with me to achieving our overarching goals of maintaining a strong chapter and creating meaningful opportunities for alumni.



President, Matt Scheller

In Scarlet and Blue -
 Matt Scheller
 mattdavidscheller@gmail.com, 4845531072

PRESIDENT'S LETTER

LETTER FROM THE ALPHA



Hello Brothers!

Another exciting year in the Psi chapter history books has begun and we haven't been this excited since the refounding! As the chapter begins to settle into its place with a firm grip on who we are at Lehigh and what the chapter means to each and every one of us, it is fitting that we begin to establish ourselves as the best Psi chapter Lehigh has ever seen.

My name is Sean Purcell and I was elected to be Alpha in November of 2014 and took office in January of 2015. Previously, I served as Kappa and Beta, as well as serving on the Interfraternity Council for a semester as the Education Chairman. With plenty of experience coming into my role as President, it was only appropriate to hit the ground running when the spring semester came around and that is just what we did. With a successful recruitment period, we solidified a new member class of 13 capable freshmen and are confident that we have set the future up for success and continual existence.

Looking forward, our focus is on refining the bylaws, continuing to foster positive alumni relations, and using our values as a base for bettering our community.

Maintaining relevancy in the bylaws is something our chapter does on a yearly basis, and it is our hope this year to not only look them over, but to truly delve into the purpose of each article polishing them so that they can continue to hold true for years to come. This perpetual positive motion is a motif that we hope to focus on in all aspects of the active chapter and is something we discussed in depth during the Briarfield retreat in January.

The annual alumni-active retreat is quickly becoming a favorite among all that attend, as it really pushes both parties to work on building communication and relationships, both individually and as a group. Much of what gets done at this retreat sets up the year for success, and we hope to continue to get a good turnout because as we progress out of our risk management struggles, we are now looking for advice on how to present ourselves within the community to represent Chi Phi in the light it deserves.

To highlight a couple of major events out of Chi Phi, we'll start in the fall with our haunted house. Setting up the chapter house in full Halloween décor and a genuinely frightening atmosphere, we had over 50 attendees get a full tour of our haunted house that ended with donations to Helwig Health and Diabetes Center. Then in the spring, Chi Phi and Kappa Alpha Theta hosted Frattle of the Bands, where our very own Crescent Left performed and placed second among tough competition! All donations went to Boys and Girls Club of Bethlehem. We have enjoyed the opportunity to show ourselves in the community and are constantly looking for new ways to impact those around us.

The last couple years in Psi chapter history have laid the groundwork for an exciting future and despite a rocky start, things are definitely looking up! We are all incredibly excited for a new year and hope to continue to pave the way for the future of fraternities all over.

Fraternally,

Sean Purcell
spp216@lehigh.edu

CONGRATS SEAN!

AT THE 2015 LEHIGH GREEK AWARDS CEREMONY,
SEAN PURCELL RECEIVED THE PRESTIGIOUS AWARD:
"GREEK MAN OF THE YEAR"
WELL DONE!

WELCOME, NEW PSI BROTHERS!

INITIATED IN FALL 2014



Gordie Newell: I am from Cleveland, Ohio. I am currently in the College of Business and Economics and am undecided in my major, though I will most likely double major in finance and accounting. I am a squash player and play on the varsity club team, here at Lehigh, at the number two position. I am excited to further my experiences as a Chi Phi!



Brendan Spillane: I am a economics/political science double major, and I am from the beautiful city of Boise, Idaho. I love shredding the knar during winter, and surfing the wake during the summer. I have two labs that are the best dogs in the world.



Zachary Nathaniel Harmon: I am from Lansdale, Pennsylvania and am majoring in Finance. I play the drums and dabble in piano. I have a respectable chill-pull ratio of 3:2. In my spare time I ball hard at Taylor Gym, dominate the playing surfaces of both table tennis and billiards, and worship the frat legend Boudinot Keith.

INITIATED IN SPRING 2015



Eric Laugeni: Eric is a Finance major from Woodbridge, Connecticut. As well as playing and watching sports, he is an avid lifter and feels at home in the gym. His plans for the immediate future include simultaneously taking a business class while working for the family business over the summer.



Matthew Rothberg: Based in Port Washington, New York, Matt is a Computer Science and Business major whose hobbies include, not surprisingly, technology and finance. He has also created his own tech support business in his hometown named Port Tech Support LLC. He is planning to expand his business over the summer as well as take math courses at NYU and work at a law firm.



Jack Fields: Double majoring in Finance and Economics, Jack is an enterprising man from Montclair, New Jersey. When Jack isn't busy working, he likes to play golf, baseball, drums, and grab sleep where he can. He is planning on caddying and interning at Pfizer headquarters over the summer.



Frank Muzika: Formerly from Alaska, Frank currently lives in Chalfont, Pennsylvania, and is majoring in Pharmaceutical Chemistry. He is working for American Infrastructure over the summer, but in his spare time, he likes to play lacrosse, wrestle, browse reddit, and play games on his PC.



Andrew Newman: Andrew is a Finance major who lives in Binghamton, New York. He likes to fill his time with fishing, golfing, and working on cars when he is not working at his local pizza shop. He is also planning to intern at a life insurance company over the summer alongside his work at the pizza shop.



Emilio Arellano: Hailing from Mexico City, Emilio is a Computer Engineering major who likes water skiing, watching movies, and coding, for which he has a small but impressive reputation. During his summer this year, he will be attending an entrepreneurship program in France.



Evan Scott: Coming from an hour south of Lehigh in Lansdale, Pennsylvania, Evan is a Computer Engineering major who is focused on moving towards Information Security. He plans to work at two restaurants in Cape May, New Jersey over the summer, but when he isn't working, he likes to play all types of sports, read, and play games on his PC.



Adam Weld: Adam, along with Emilio and Evan, is a Computer Engineering major. He lives across the United States in Seattle, Washington, and can be found in climbing gyms when not working on his car, robotics, or his photography skills. For this summer, he has the exciting opportunity to work with a seed stage startup called Project Voxa that designs and builds miniaturized electron microscopes.



Justin Brock-Smith: Justin is an undeclared major from Arts and Sciences moving into CSB. He is from Manhattan, New York, and likes swimming and playing soccer. He was a lifeguard for last summer and will be continuing that job for this summer.



Danny Kessler: Danny is the only IBE (Integrated Business and Engineering) major in the pledge class, specifically Chemical Engineering. He likes playing basketball and soccer and will pull groups together to go play soccer at Goodman Campus on warm days. In the summer, he is working for a local business in his hometown of Groton, Massachusetts.



Kyle Malek: Kyle is a Chemical Engineering major who lives in Flemington, New Jersey. He enjoys playing basketball and running as well as playing the saxophone, which he did in a Battle of the Bands hosted by Chi Phi. Most fair weather days, he likes nothing more than jumping into basketball games on our court. This summer, he will be a counselor at a summer camp near his hometown.

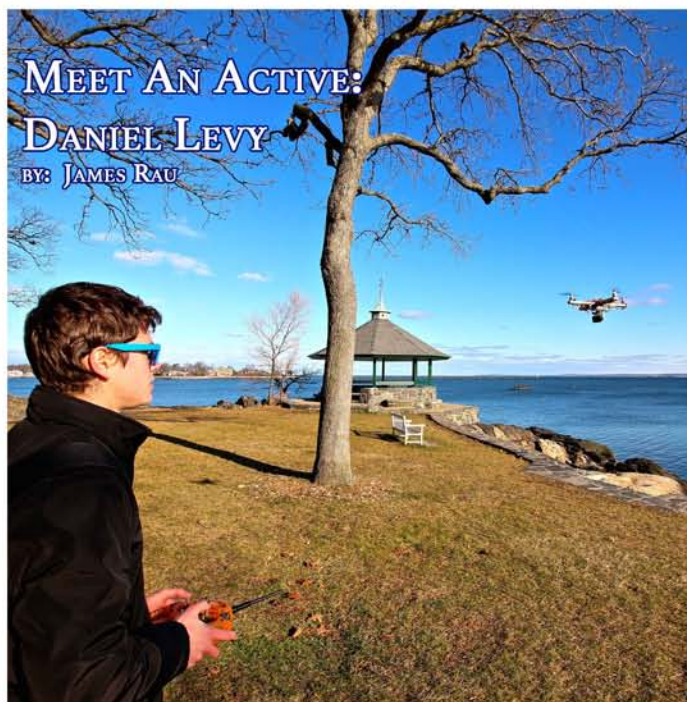


Ramzi Yanez: Based relatively close to Lehigh, Ramzi is from Newtown, PA, and is a Materials Science and Engineering major. He likes to play soccer, lacrosse, and is a fan of Superman. Over the summer, he will be working at Lehigh in the athletic department.



Mike Zunno: Mike, commonly known as Zunno, is a Bioengineering major from Mahopac, New York. In his spare time, he enjoys playing basketball, watching sports, and making light of every situation that he comes across. He loves Lehigh so much that he is staying for the summer to take a course in Physics in order to get ahead in his course plan.





For the past year Br. Daniel Levy has built and learned to fly a quadcopter. The small machine is often seen well above the treetops in front of Chi Phi as he seeks to capture perfect footage. "I started by mounting 4 motors onto wooden cross beams and then progressed each week to feel more comfortable higher in the sky. I've had a few redesigns and crashes but that's the fun of it all – learning what makes the copter most maneuverable." A Mechanical Engineering major, Dan takes advantage of the University's 3D printing machines to further gain experience in computer-aided software. He is now onto his third design, which includes printed landing gear and an extended GoPro mount. Dan is currently working on testing a gyro based, camera stabilizer to better improve the quality of footage. He is working with the school to capture the Lehigh experience through a "hawks-eye view" as well as applying what he's learned so far to his summer Mountaintop research project, heavily based off of 3D printing.

SUMMER INTERNSHIPS

BY: MIKE MARTINSKY '16

As the summer months quickly approach, so do start dates for many juniors and seniors as they begin their respective new jobs and internships. The internship between junior and senior year is crucial for many juniors, as it is potentially their first exposure to a job in their field as well as life in an office or factory. Interns often go on to receive full time offers from the same firm, so the internship application process can be even more competitive than the full time hiring process at some companies.

Junior Ian Herrighty '16 is excited to continue his relationship with Mack Trucks, the ubiquitous truck manufacturing company with a plant in nearby Muncie, PA. This past fall, Brother Herrighty worked at Mack full time as part of the co-op program, and proved to be so invaluable that he was asked to stay on in a part time role after the co-op ended. A Mechanical Engineering major, Ian has been working on a variety of testing and efficiency optimization projects. Certainly, the project management experience he is gaining will be applicable to any job in his future, and he is excited to see what projects they will place him on this summer.

For others, summer is a great time to delve into some deep research in a field of their passion. Brother

Dan Levy '16, Mechanical Engineering major from Scarsdale, NY will be working on a Mountaintop research project sponsored by Lehigh. His group's task is to help design an exoskeleton to help stroke victims re-acquire muscle memory. Drawn to the topic and its heavy reliance on emerging 3-D printing technology, Dan is excited to participate in the second year of the Mountaintop research program.

Finally, our current Alpha Sean Purcell '16 will be taking a role at The Hartford in the Operations and Technology Leadership Development program. After working under Jay Crosby last summer at Emmanuel Insurance in Blue Bell, PA, Sean is looking forward to further exploring corporate IT in a fast paced environment. A Computer Science and Business Major, Sean is well prepared for any technical tasks while also having the business background to see the larger business picture.

Clearly the brothers of the Psi Chapter are setting it themselves up well for the future with such a variety of internships. Other brothers will be working at firms such as JP Morgan Chase and General Electric, and the rising juniors have been active in their desire for the great networking content and events that the chapter plans to offer in the coming year.



Tschoop's Grave, Winter 2015



GRADUATING SENIORS AND OUR NEW ALUMNI!

Mark Dipsey
Electrical Engineering

Brian Boland
Chemistry

Sabin Woolworth Colton VII
Finance

Dean Eldridge
Integrated Business / Engineering,
Mechanical Engineering

DJ Goldblum
Sociology

Zachary Madigan
Electrical Engineering

Max Schoen
Electrical Engineering

Maxwell Smith
Cognitive Science,
Computer Science



Jeff Peisner
Mechanical Engineering

Jay Fraser
Bioengineering

Brett Ricci
Biology / Pre-Med

Contact Secretary Ray Glemser to get
in touch with any of these graduates:
ray.glemser@glemser.com

Briarfield Meeting, Spring 2015

CHI PHI ~ PSI CHAPTER ~ LEHIGH U. ~ EST. 1873 ~ 142 YRS



“WHY DO WE HAVE TO DO ACCREDITATION? WHAT’S THE POINT?”

BY: TIM WILKINSON, DIRECTOR OF FRATERNITY AND SORORITY AFFAIRS

This is a question I answer at least once a week. Whether it is at a chapter dinner, a meeting with a president, talking with an alum, or explaining Greek Life to a member of the Lehigh Community, Accreditation is always a lightning rod for discussion. Recently I sat down with some chapter new member educators to discuss Accreditation and answer this very point. Here’s what we came up with...

- **Template for balanced programming:** The five sections of Accreditation are set up to reflect what any well balanced chapter should be working on. Every Greek organization that is working to develop undergraduates needs to concentrate on building academic and leadership qualities within those undergraduates. From a community perspective, being in a values based organization also means giving back to the community and holding oneself accountable for learning within the community. Any well run business understands the need for intentionally thought out budgeting, delegation and support structures. Lastly, any living group operating independently within a facility knows that importance of upkeep, maintenance of that living space, as well as ensuring the entire organizations shares in that accountability.

- **Assessment for chapter programming:** The Accreditation process was conceived and redesigned by higher education experts in the fields of leadership, residence life and fraternity and sorority affairs. Additionally, Lehigh students and alumni were able to add in the context and institutional memory that comes with running a chapter on old South Mountain. There is no better mix of consultants to assess whether or not chapter programs are effective and relevant. Essentially, if you look at the Accreditation presentation and report as an organizational diagnostic, think of the panelists as consultants whom want to make sure the diagnostic checks out as functionally as possible. The goal of the recommendations is to do exactly that.

- **Transition tool/Record keeping for chapters:** If you click on www.studentaffairs.lehigh.edu/content/accreditation, you will see that OFSA keeps the last seven years’ worth of Accreditation reports of each chapter. What better strategic planning materials can you have? Chapters and alumni literally have a history of highs and lows, trends and learning opportunities at their fingertips. Whenever a new group of chapter officers take over, OFSA’s advice is to **READ THE ACCREDITATION REPORTS**. We want to make sure that organizations use them as the tools that they are meant to be.

- **Measuring stick for raising standards/Assists chapters in finding their direction:** Chapters are always trying to figure out what the next step for the organization is. Under each of the five sections of Accreditation, the committee creates a Chapter Development Question. This question is meant to be a guidepost for each chapter in each of the five areas. The questions are customized to meet the progress of each chapter, for where they are at. In other words, the Chapter Development Questions are the Accreditation Committee’s primary recommendation on the most pressing area of challenge for a chapter to improve upon, or the biggest success story that a chapter should augment and highlight for the rest of the Greek Community.

Chapters often worry that Accreditation is designed “to get rid of chapters.” Lehigh has some of the highest standards in the nation, no doubt about it. However, here are some statistics to disprove the goal of Accreditation is to destroy the Greek community.

- In the past ten years, there have been over 300 Accreditation presentations. Of those 300 presentations, only 29 “Poor” ratings have been assigned. 10 of those 29 “Poor” ratings occurred in 2004-05, the first year of Accreditation.
- In that same period of time 68 “Gold” ratings have been assigned.
- Of the 29 organizations that received a “Poor” rating, only two received a second consecutive “Poor” rating.
- Of the 300 presentations, only two organizations received an “Unacceptable” rating.
- Essentially, in the decade that Accreditation has existed, chapters have a 1.3% chance of losing their recognition through Accreditation versus a 22.6% chance of being rated “Gold.”

When Accreditation is used as a tool, and chapters embrace the support networks behind it (Accreditations Liaisons, the support of OFSA advisors), it is a national best practice. Lehigh’s Accreditation process has recently been nominated as a 2014 Association of Fraternity/Sorority Advisors Outstanding program or initiative. It truly is the backbone of our chapter development initiatives, and an important part of Greek Life at Lehigh.

Pictured is the actives 2015 accreditation presentation. Psi Chapter has received a SILVER rating every year except in 2012-2013 we received a GOLD rating.



MEET YOUR NEXT GRAND ALHPA

Chi Phi Bothers of the Psi Chapter,

I was initiated a Chi Phi Brother during the fall semester of 1981 at the Florida State University. As an undergraduate, I answered the call of my chapter and held several officer positions and committee chairs. Combining my efforts with the strengths of my brothers, we made our chapter a leader on campus and in the community. I received my Bachelors of Science Degree, with majors in Mathematics and Computer Engineering.

After graduating, I moved to the Washington, DC area to pursue a career in computer engineering, working for several defense contractors in the years to follow. I joined the Chi Phi Club while living in DC, as well as became the Colony Advisor for the new Chi Phi group being formed at George Mason University.

When I moved to Tampa in 1988, I became the Chapter Advisor for the Delta Zeta Chapter at the University of South Florida. I also became a member of the Florida Regional Alumni Association, a group of alumni who supported all the chapters and colonies in the State of Florida. Eventually, I became the President of this Association. I also served as the President of the Nu Delta Alumni Association at FSU. During the 1990's, I volunteered as a faculty member for the College of Excellence, an annual leadership academy that Chi Phi put on nationally for all undergraduates. In 2000, I became the Dean for this academy.

In 2000, I was elected Grand Alpha for our Fraternity. I served as Grand Alpha until 2005. During these five years, my administration worked diligently to bring sound business practices into the National Fraternity's operations, executing against annual balanced budgets, with a focus on being more fiscally responsible to all our members.

From 2009 – 2014, I served as the Grand Beta under Grand Alpha Jim Soderquist's Administration. This past summer at Congress, I was chosen as the next Grand Alpha-Elect for our Fraternity and will take over the role of Grand Alpha at Congress next summer. My major objective is to improve upon our outreach to our alumni through the creation of more Chi Phi Clubs, better communications and support to the Alumni Associations, and the development of regional zones across the country that can focus on the challenges being faced in these areas.

My Chi Phi journey over these past 33 years has taken me through many peaks and valleys at the local, regional and national levels of our Fraternity. Challenges along the way kept me on my toes and made me appreciate the brotherhood we all share as Chi Phi members. When asked why I give so much for the good of the Order, I point to our Fraternity's motto and vision, which resonate strongly within my personal beliefs and values. The mission is to build better men through lifelong friendship, leadership opportunities, and character development. The vision is to grow the organization through a complete dedication to developing the full potential of all our members and building a strong, vibrant alumni network. At every turn and fork in the road during my journey, I have strived to be a positive influence to the undergraduate and alumni alike, with the goal of continual existence for our Fraternity at both the Chapter and National levels. After all, we are the oldest national social fraternity and I look forward to seeing us all come together in 10 years to celebrate our 200th anniversary!

In Scarlet & Blue,
Ron Frank, Grand Alpha-Elect



Left: Grand Alpha Jim Soderquist, Right: Grand Alpha-Elect Ron Frank

MINUTES FROM THE GRAND COUNCIL MEETINGS

COURTESY OF ALAN ABELS

JANUARY 14, 2015 MEETING:

At this meeting, the national staff stated that plans are in motion to open two new chapters each semester in the foreseeable future. This spring, we plan to grant charters to two colonies, Alpha Delta at Penn State and Gamma at Emory University. New colonization efforts are underway at UT – Austin as well as ongoing colonies at UNC – Wilmington and Arizona State. There are plans for the future including Iowa State and Towson University this fall. Rutgers is currently scheduled for the fall of 2016. Anyone interested in being on an alumni council in any of these areas, should contact National with your interest. Some of these start-ups are restarts and some are brand new and could use alumni support since they will not have alumni from that school to help them get started.

Chi Phi National received a bequeath earlier this year of a substantial amount. The Grand Council and the National Director have decided to utilize some of these funds to add to the staff, individuals who will have the responsibility of going to the various schools and leading the start-up efforts. This will save us having to rely on outside organizations to do the work for us.

The Congress this year will be held in San Francisco this June 19 - 22. Any brothers in the area may wish to attend or simply come to a dinner or the golf outing. The 151st Congress in 2016 will be held in Madison Wisconsin. You can register for congress by going to www.chiphi.org and clicking on XΦ Connect.

On March 28th, the Greek Life Museum officially opened in Atlanta. The museum had been planned and constructed by the Educational Trust over the past several years. A Brother Abels and Scheller, as well as around 100 Chi Phi's from around the country, attended this event. This is the first museum of its kind in the country.

MARCH 28, 2015 MEETING:

The "Changing Lives" capital campaign, to raise \$10 million for the educational trust has concluded. Over the last couple of weeks four donors stepped forward and pushed us over the top to \$11.2 million.

Brother Azarian (national director) presented some disappointing news: Kappa Chapter (University of Wisconsin – Madison) which was chartered two years ago was closed by the university for hazing. Also it appears that Gamma Colony (Emory) may close as well for hazing. They were weeks away from having the Grand Council vote on their charter petition.

Alpha Chi Chapter (University of Michigan) wanted to initiate a female who is trans gendering to a male. This was stopped since by legal terms she is legally a female.

RLA's (Regional Leader Alliance) were a success this year. 510 undergraduates attended, roughly 25% of our undergraduate population. This is up from approximately 465 last year. At the last RLA in Atlanta, they tested an alumni track for the first time which was attended by 10 alumni and was considered to be very useful.

Currently the National office is positioned to start or restart 2 colonies every semester.

Total member education was discussed with emphasis on College of Excellence, we will be using our on curriculum this year, and on New Member Education. An old new member program that was developed over 15 years ago and never deployed will be dusted off and revamped. The idea is to allow for chapter individualism but also make sure that certain material is covered, especially Risk Management.

The National Office has been advised that it will be receiving a gift from an estate in the range of \$110K. The Council has decided that this will be used to pay for the writing of the Chi Phi Chronicles volume III.

There was considerable discussion related to hazing and social media on Saturday. Obviously this needs to be part of the new member training and an on going education item for actives and alumni. Many people felt that the new member educator was perhaps the most important officer position next to the president and that there will be a push by national to get chapters to move this position up in their officer elections and importance to number 2.

CARL J. GLADFELTER GIFT

On Nov 2, 2014, Carl J. Gladfelter joined chapter eternal. Few Chi Phi's have shaped the fraternity like Brother Gladfelter. He has served as Grand Zeta, Epsilon and Alpha. Visit the Chakett online at chiphi.org for a full summary of his impact on our fraternity.

The Briarfield Association has donated \$600 to the Carl Gladfelter fund, and will be recognized on a plaque in the Greek Life Museum. The donations were used to fund the Museum and a specific display about Carl. The display includes a large portrait, museum boards about his life, the preservation of his writings and papers, his fraternity collectibles, and much more. Through Carl's writings and papers, one can get a very clear understanding of what it was like to be a student and specifically a fraternity man in the 1960s and 1970s.

PSI CHAPTER BROTHERS JOIN THE NEXT GRAND COUNCIL

Beginning in June, under the council of Grand Alpha-Elect, Ron Frank, Brother Alan Abels will take the position of Grand Delta, and Brother Matt Scheller will be Grand Epsilon.



25th Annual Golf Tournament



NYC Happy Hour



Lehigh / Lafayette

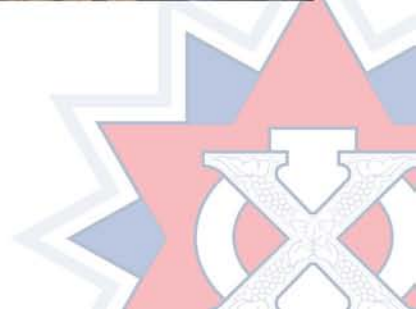


Lehigh / Lafayette



Philly Happy Hour

CHI PHI ~ PSI CHAPTER ~ LEHIGH U. ~ EST. 1872 ~ 143 YRS



PSI CHAPTER HISTORY

By: ALAN ABELS

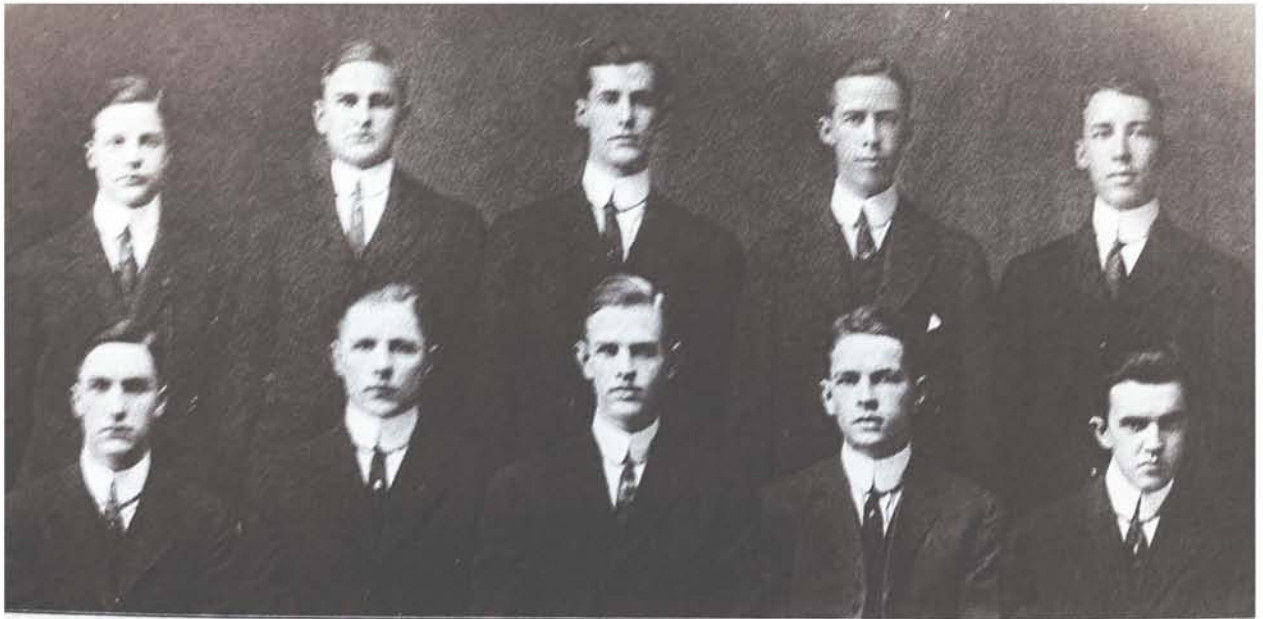
Although Briarfield did not actually purchase a house for Psi until 1901, plans were underway as early as 1890 to secure a house for the chapter. As is evidenced by letters from Brother Lewis Stockton '81 to George Booth '86 in June and July of 1891 and a letter from Hubert Bonzano '88 to Booth in May of 1891 regarding the purchase of the Neilson house on Fountain Hill which ultimately did not take place.

In the fall of 1888, Psi had leased a house on 4th Street. This house had been vacated by Sigma Phi when they moved into a new house on Fountain Hill which their alumni purchased. The stigma of being in a house given up by a rival fraternity did not go over well and was detrimental, not only to the attitudes of the brothers residing there but also to prospective members. This move however seemed to have revitalized the alumni interest in the building fund.

In 1890, Albert Brodhead '88 agreed to turnover and fix up a house that previously belonged to his father. Many of the local alumni did not think this house could be fixed up to adequately house the Chapter, thus prompting the move to purchase the Fountain Hill house. Brodhead, however succeeded and turned the house over to the Chapter in the fall of 1891. Current knowledge is that the Chapter resided here until 1901 when the alumni purchased "The Briarfield" and formed The Briarfield Association, a corporation for the purpose of maintaining the house for the active chapter. This house at one time was the residence of Brodhead's father.

Psi SCRAPBOOK

*Class picture
circa 1912.
Pictured in the
back middle is
Elisha Boudinot
Keith*



WHITEMAN
QUINN

BAKER
WESTERN

KEITH
HARTLEY

JOHNSON
WALLACE

ROBERTS
SANDBERSON

CHI PHI ~ PSI CHAPTER ~ LEHIGH U. ~ EST. 1872 ~ 143 YRS



PSI SCRAPBOOK



PSI CHAPTER
FOUNDED 1872
LEHIGH UNIVERSITY



PSI CHAPTER
FOUNDED 1872
LEHIGH UNIVERSITY
BETHLEHEM, PENNSYLVANIA

*Pictured are
early photo-
graphs of our
chapter house.*

*Top:
Living Room*

*Bottom:
Dining Room*

CHI PHI ~ PSI CHAPTER ~ LEHIGH U. ~ EST. 1872 ~ 143 YRS



FRATERNITY CHALLENGES 2015

By: ANDY HUTNIKOFF

In the last several weeks we have seen a quite number of Greeks organizations in the news for poor behavior. Behavior that was tolerated 5 years ago or even 2 is not today. What once was considered a prank or joke no longer is. What is acceptable today may very well not be tomorrow. "Political Correctness" Is reigning supreme. What once was poor judgment or a mistake is now a crime.

With the advent of cheaper and better technology, just about anything and everything is being recorded and shown. The irony of this technology is it has changed what was once a learning environment (college), where it was expected mistakes would be made, to one of intolerance for anything but perfect behavior!

The consequences have changed dramatically in the last 2 years and no end is currently in sight. Greek chapters are being shut down. Members are now being expelled (relatively new development). Members are facing criminal charges (real new development). Finally, Human resource computer programs can and will screen these individuals out for hiring. Why risk it when 100 other applicants are in the queue without issues? These mistakes and poor behavior incidents will impact young folks for the rest of their lives! It's a very different world today.

Much of this is driven by the fear of litigation. No University Administrator wants their organization or themselves to face charges for civil rights violations, allowing hate crimes, rapes, hazing, and deaths from hazing etc. on campus.

At Lehigh a new system of nonresidential Greeks was formed as an alternative lifestyle. It appears now most if not all will jump at the opportunity to get their own house. The system has evolved into a feeder to replace chapters booted off the hill (not the original intention). The queue is fully loaded for the next vacancy!

Finally to the average man on the street the Greeks are a bunch of spoiled rich elitist driving BMWs and Mercedes. They deserve to be taken down a step or two. The image of animal house behavior is also alive and well. It's not helping at all. The average guy has no sympathy for the system and no idea of any good it does.

We are facing an uphill battle on this trend. Unfortunately, we have a bunch of young, immature, inexperienced guys at the lead. It's a simple fact of being in college they're all 18-22 years old. That's a difficult position to be in when learning by trial and error is not allowed! Alumni and chapter advisors need to be extra vigilant if they expect their organizations to survive.

dear salty

It is great to be back in the Briarfield Alumni Bulletin after a long layoff!

Here is the latest stuff regarding alumni from the 1970's:

Congrats to recently married couples:

Jeff Citrone and Kristin. They were also at the Lehigh- Lafayette Game at Yankee Stadium last November. Jeff why don't you stop by NYC on New Years Eve when the ball drops. You could use it. Jack "Cranny" Tomasic and Holly. They are now living the good life in Bluffton, South Carolina. Congrats !!!!!

Others 70's guys at the 150th Lehigh -Lafayette football game in NYC: Dr. Bob Penterson and Steve "Beener" Waldenberg and their wives . Al Abels and his empty bottle. How did you get home Al ?

We are jealous of some 70's Alumni who retired recently, including:

Cranny Tomasic (Is Bluffton a real town?)

John (J.C.) Conover

Kerry (I love peanut butter and jelly) Sewell

Jeff (retired since birth) Rohrer

Enjoy and do something productive, like get a job. Barrett (the head-hunter) Cummins can find you work, if you need it.

Gus Danjoi, Jan Platovsky and Villa have been texting a lot during the World Cup games and other soccer matches. Get a life guys.

Heard that Sewell and Carl Bosh were seen riding bicycles around together in the countryside. They should have been arrested for disturbing the peace.

Where is John "Magoo" DeMaguregui? Is he hiding out somewhere in the jungles with Pete Danbury?

Al Abels, Chip Schwarzbach , Andy "Hut" Hutnickoff and Doc Sinclair have been spending a lot of their personal time volunteering with the Briarfield to keep the house alive and well. Thanks.

Abels even got named as the Grand Delta to the National Chi Phi Executive Council.

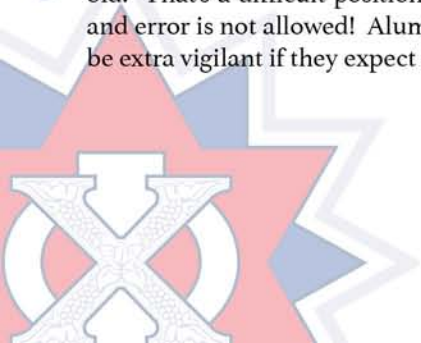
Last year we went up to Boston for Joe Iannoni's daughter Krista's wedding. Let me know if your kids recently got married.

Send me your life updates and I will post them here. If you died forget it. Sorry if I misspelled any names but get over it.

SALTY c.villa@yvallc.com



Interested in keeping the news for your era? Please send it in: mattdavidscheller@gmail.com



ALUMNI SPOTLIGHT: BRAUN BAKEL '00

After graduation, Braun Bakel '00, was hired by the Department of Defense at Norfolk Naval Shipyard as a Nuclear Engineer. Now, after almost 15 years, he is currently the Nuclear Project Engineer for refueling the Navy's east coast fleet of Ohio class ballistic missile submarines. He has completed previous refueling projects on the USS ALASKA, and TENNESSEE, and is now currently working on the USS MARYLAND. Each of the Navy's 560ft "boomers" have an operating lifecycle of 15+ years, before replacement of expended nuclear fuel, with new fuel, is required. The Refueling and Overhaul (ROH) process also involves a general maintenance fix-up, renovation, and modernization of the entire ship over the 2-3 year project timeframe. Bakel is responsible for all of the planning, material ordering and procurement, technical work documents, and certification of the nuclear reactor plant for each submarine his project team works.

Aside from his professional life, Braun recently celebrated his 7th wedding anniversary to his beautiful wife, Joleen. The two of them have two young boys, Kai (4), and Nathan (18 months), which keep them very busy outside of the office. The family of four spends most of their free time playing in the sand and sun of the Chesapeake Bay - a short walk from their house in Virginia Beach, VA.

One of Braun's favorite pastimes he discovered since his time at Lehigh, is the sport of kiteboarding. After getting into the sport in 2005, Braun tries to spend as much time on the water as he can. Not only does he enjoy kiteboarding near his house in Virginia Beach, but has also had the opportunity of riding in the Outer Banks of NC, the beaches of Florida, the British Virgin Islands, and the north shore of Maui.



OUR BROTHERS AT LAFAYETTE

By: Jerry Blakeslee, Rho '70

The Rho Chapter of Chi Phi continues to strengthen while operating off campus at Lafayette. At the end of 2014, the Chapter formally petitioned to return to the Lafayette College campus and sought full support from the administration to once again reside in Vallamont, our fraternal home since 1909. After an historic 20 year war on Greek life at Lafayette which has reduced the number of fraternities on the campus from 18 to 3, the College's new President, Alison Byerly, has opened the door to the creation of new student directed living, learning organizations, which she has stated may include new fraternities and sororities so long as there is a demand for such residential organizations. The college is currently developing the process by which new applications will be reviewed and new organizations will be accepted into the campus community.

To demonstrate demand for our Chi Phi brand, Rho has provided the VP of Student Life with a list of the 32 highly qualified men interested in forming the new Rho Chapter at Lafayette, and a detailed plan of our philosophy, operating principles and procedures. We expect to make a formal presentation to the administration late this semester or early in the spring.

Rho Chapter is most grateful for the continuing support of our Psi Brothers in helping to build and organize the new Rho. We are making great progress on our plan to become the model Greek organization at Lafayette.

JOHN C SCHMIDT '68 CHI PHI LOAN

About a year and a half ago, we received a generous gift of 20K into the P&E account from the estate of brother John C. Schmidt. Brother Schmidt graduated in 1968 with an Industrial Engineering degree. While in Chi Phi, he served as the Alpha, Zeta, social chair, and campus relations chair. We have decided to use this money to set up a loan program for our active brothers, the John C. Schmidt '68 Chi Phi Loan, which is designed to cover half of their semester fees. We have worked with the university over the past six months to solidify the process and formalize the loan. The loan will be treated like any other university loan, except the Briarfield will be in charge of determining the recipients. We will issue on average one a semester. Some of the criteria includes:

- Demonstrate financial need, as determined by OFA
- Academic progress
- Demonstrate leadership values within the fraternity and/or campus

CHAPTER ETERNAL

David Charles "Dave" Reed, class of 1973, passed away on April 1 2015 at the age of 64. Born in 1951, he resided in Pittsburgh and studied Business while at Lehigh. At the time of his death and for more than ten years prior thereto, David served on the board of directors of 1st Constitution Bank, where he chaired the Audit Committee. Additionally, he was serving as a director of both Arden-Sage Multi-Strategy TEI Fund and Arden-Sage Multi-Strategy Fund. More recently, he also became a trustee of two alternative mutual funds sponsored by Arden Asset Management, LLC in New York.



2015 ALUMNI DUES

Membership into the Chi Phi Fraternity is a lifelong commitment. Part of that commitment is showing financial support on an annual basis to our alumni association, The Briarfield. Without your financial contributions, we would not be able to support the active chapter, maintain the condition of our chapter house, hold alumni events, offer academic awards for the actives, stay involved on a National level by sending brothers to Congress, and so much more. Your donations to the Briarfield keep our chapter alive. Recently, we have triumphed amidst the challenge of changing times and have become a stronger chapter than ever before. Your support is not only greatly appreciated, but critical in helping to maintain our continued growth and keeping our longstanding history and tradition alive!

YOUNG ALUMNI : \$25 (*graduated less than 10 yrs ago*)

ALUMNI : \$75 (*graduated 10 years ago or more*)

*Dues are not tax-deductible. Payments can be made online at briarfieldassociation.org via [PayPal.com](https://www.paypal.com) OR you can mail a check payable to "Briarfield Alumni Association" to: **Alan Abels, 180 Manorside Dr, Brick, NJ 08724***

GIVING - 7/2014 -1/2015

Psi Level (\$0-\$100)

Dichard Rex	Joseph F. Iannoni
Carl Meitzner	Dean Castor
Jay T Crosby	Matt LaMonica
Aarne Vesilind	Michael Lozanoff
Philip Burtner	Robert J. Baum
Stephen Waldenburg	Robert Phillips
Charles Hanchett	Robert Magee
Brad Parkes	Stephen Menand
Craig Villa	David Emery
Ardie Emery	Sonny Applegate
Brandon Millen	Bruce Adam
Robert Penterson	Nicholas Carr
Daniel Povinelli	Matt Scheller
Adam Perry	Ralph Fortney
David Wachs	Charles Steigerwald
Matthew Stayman	Joseph Shearer
Joe Lambariello	John Walker
Edmund Spitzig	Chip Uricchio
Ed Bacheson	Seth Williams
Carlton Clark	Jacob Schwartz
John Yard	Paul Weibel
James Findley	Franklin Lucard
	Dick Sprengle

MATT SCHELLER LEVEL (\$101-\$200)

Timothy Onderko
Mikell Groover

DAVID EMERY LEVEL (\$201-\$300)

Christopher Hemschot
Derek Bowen

DONATIONS to the Active Chapter

Tax-deductible donations can be made to the Psi chapter directly to the University. The Briarfield does not have access to these funds. This donation goes into the Lehigh Programming and Education (P&E) Account or the Memorial Scholarship Fund. Donations to the P&E are used to fund educational programs, conferences for the actives, as well as improvements to our chapter house. The Memorial Fund goes towards scholarships for active brothers.

These donations can be made online at: briarfieldassociation.org, <http://mylehigh.lehigh.edu/givechphi>, OR you can email a check payable to "Lehigh Annual Fund" to the above address. In the memo, please write "Chi Phi P&E Account" or "Chi Phi Memorial Scholarship Fund".

Lehigh / Lafayette \$150 Challenge Contributors

Willet Egge	Brad Parkes	Spencer Bartram
Aarne P. Vesilind	Matt Scheller	Brian McAuley
Ray Glemser	Justin Morrison	Greg Marshall
John McCawley	Lawrence Jacobs	David Wachs
Kurt Lesker	Craig Richard Villa	Christopher Salvucci
Kent Straat	Michael Eisenberg	James Zahm
Robert Miller	Tim Onderko	Alex Georgopoulos
Paul Schwarzbach	James Cardamone	James Kaplan
Jay T. Crosby	Bob Stewart	Andrew Gleichmann
Paul Laconte	Warren Kudman	Chris McNish
Joe Lambariello	Philip Burtner	John Walker
Barry Kraver	Mike Lozanoff	Wallace Murray
Andrew Griffin	Christian Brooks	David Dougherty
William Ebeling	Brian Golebiewski	Stephen Waldenburg
George Hagstoz	Alan Abels	Bill Bassett
Robert Phillips	Matt Siegel	Bruce Adam
Seth Williams	Ben Katz	
Rex Hazelton	Bevan Lawson	

Briarfield LEADERSHIP

President: Matt Scheller, mattdavidscheller@gmail.com
Vice President: Mau Arellano, mauski7@gmail.com
Secretary: Ray Glemser, ray.glemser@glemser.com
Treasurer: Alan Abels, aabels157@comcast.net
Faculty Advisor: Prof. Ken Sinclair, kps1@lehigh.edu
IT Coordinator: Casey Atkins, cratkins767@gmail.com

Trustees:

Andy Hutnikoff
Dave Emery
Chip Schwarzbach
David Long
Patrick Lee
Barry Kraver
Mau Arellano

Andrew Basso
Ray Glemser
Alan Abels
Matt Scheller
Jay Crosby

Trustee Emeritus:

Prof. Ken Sinclair
Ned Spitzig
Ardie Emery
Aarne Vesilind